

Integrated Powertrain and Chassis Control - and overview of related activities at Chalmers



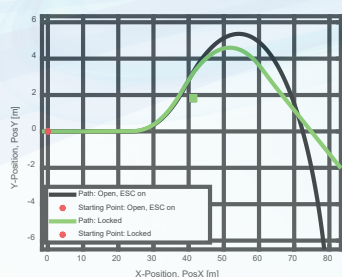
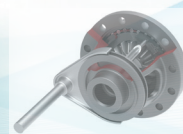
Dr. Mathias Lidberg

Vehicle Engineering and Autonomous Systems
Mechanics and Maritime Sciences
Chalmers University of Technology, Sweden

言語 / 英語 Language / English

Abstract:

In recent years the powertrain electrification of road vehicles has accelerated with a significant increase in the energy density of batteries and a simultaneous decrease in cost of electric vehicles. Powertrain electrification can reduce harmful emission of greenhouse gases but it can also be an enabling technology for development of transportation and vehicle technology at large. In this presentation, the aim is



first to highlight an overlooked potential of using drivetrain control to significantly improve the driving safety of cars and secondly to explore the opportunities and potential impact of electric powertrains on vehicle dynamics and control. Integrated powertrain and chassis control (braking, steering, suspension) is not a new research area but with the recent trend of powertrain electrification motivates a revisit to this research area. The research outcome can be important for other developments e.g. motion control for automated driving and autonomous functions.

Tuesday,
February 4 2020,
16:00 ~ 17:30

東京農工大学 小金井キャンパス
スマートモビリティ研究拠点(CAD/CAM実習施設) 3F 373会議室
Room 373, 3rd Fl., CAD/CAM Laboratory,
Koganei Campus TUAT

■共催 / Co-Organized by

グローバルイノベーション研究院 エネルギー分野 小笠原研究チーム
Institute of Global Innovation Research "Energy" Ogasawara Team

卓越大学院プログラム

Excellent Leader Development for Super Smart Society
by New Industry Creation and Diversity



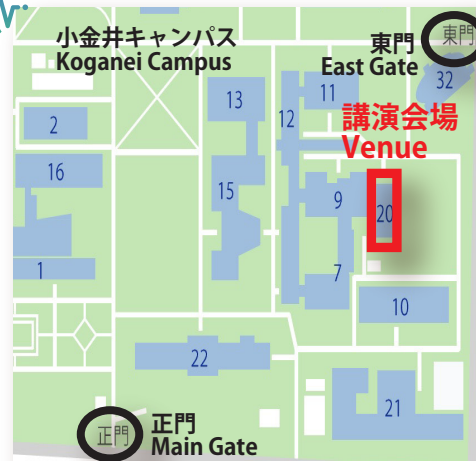
■お問合せ先 / Contact

グローバルイノベーション研究院 工学研究院
ポンサトーン・ラクシンチャランサク

Institute of Global Innovation Research, Institute of Engineering
Prof. Pongsathorn Raksincharoensak

Email: pong (ここに@を入れてください) cc.tuat.ac.jp

どなたでも、ご聴講いただけます。
Everyone is welcome to attend.



詳細はホームページをご覧ください

Please refer to our website for more information

URL: <https://www.tuat-global.jp>

<https://www.tuat-global.jp/english/>